

MPT2 MONOPOINT | LED SURFACE MOUNT 4" CANOPY

| | |
|--|------|
| Project Name | |
| Date | Type |
| Prepared By | |
| Comments | |
| Catalog # MPT2- - - - / - / - / | |

PRODUCT FEATURES

Monopoint – Surface Mount 4" Canopy

- Die-cast aluminum construction with 4" SQUARE or ROUND canopy for integral or remote mounted LED driver.
- Multiple lengths available including: 6-1/4" (standard), 12-1/4", 18-1/4", and 24-1/4". Ceiling or wall mountable.
- Features integrated snoot with 1/2" beveled regress for glare control.
- Available in many designer finishes including: **WH**-White, **SA**-Satin Aluminum, **OB**-Oil-Rubbed Bronze, and **BK**-Black.
- Rotates 320° and tilts 110°.
- UL damp listed (covered ceiling/wall applications). Not for wet locations.

LED Options

- **HI** 3000K 92+ CRI White LED. Minimum 2-Step color binning.
 - **HI-2** 3000K 92+ CRI White LED. Minimum 2-Step color binning. Note: For use with 10° optic option only.
 - **WD** 3000-1800K 97+ CRI Warm Dim LED. Minimum 3-Step color binning.
 - **WD-2** 2800-2200K 95+ CRI Warm Dim LED. Minimum 3-Step color binning.
 - Optic options include: 10°, 15°, 25°, and 40°. Note: 10° optic option for use with **HI-2** LED option only.
- Note: To ensure fixture to fixture color consistency, use of the same LED option with adjacent fixtures is recommended.

Optical Accessories (Optional)*

- **HEX** - Hex-cell louver
 - Field interchangeable beam enhancing lenses include: **NSP**-Narrow Softening, **NFL**-Medium Softening, **FL**-Wide Softening, **WFL**-Extra Wide Softening, and **LS**-Linear Spread. See Page 2 for details.
 - Field interchangeable color filtering lenses include: **CF24**-2400°K, **CF27**-2700°K, & **CF35**-3500°K.
- *Up to three optical accessories can be accommodated.

Dimming Options

- **DIM1-M*** Integral phase dimming LED driver with 120v/60Hz input. Dimmable to 1% using compatible Forward or Reverse-Phase dimmers.
- **DIM2-M*** Integral 0-10v LED dimming driver with 120-277v/60Hz input. Dimmable to 1% using compatible 0-10v dimmers.
- **PR1-M*** Integral premium phase dimming LED driver with 120v/60Hz input. Dimmable to 0.1% using compatible Forward or Reverse-Phase dimmers.
- **LU1R-M4**** Remote Lutron Hi-lume **LTEA2W** 1% 2-wire LED driver (120 V forward phase only). 120v/60Hz input.
- **LU2R-M4**** Remote Lutron Hi-lume **LDE1** 1% EcoSystem LED driver with Soft-on, Fade-to-Black. 120-277v/60Hz input.

*4" x 3-1/2" deep junction box with 3" x 1/2" deep (min) mud-ring required for integral drivers.

**4" x 1-1/2" deep junction box with 3" mud-ring optional for remote mounted drivers.

For complete list of compatible dimmers, see 8lighting.com/resources-downloads

Output

- **700** Low output. Delivers up to 840 lumens.
- **1000** Standard output. Delivers up to 1088 lumens.
- **1000-WD** Standard output - Warm Dimming. Delivers up to 875 lumens.
- **1400** High output. Delivers up to 1108 lumens.


For photometric files in PDF and IES formats, see 8lighting.com/mpt2-series

Mounting Accessories (Optional)

- **JB-5/8** 3-1/2" deep junction box with 5/8" deep mud ring.
- **JB-3/4** 3-1/2" deep junction box with 3/4" deep mud ring.
- **JB-1** 3-1/2" deep junction box with 1" deep mud ring.

For low and standard output options, ambient temperatures adjacent to fixture should not exceed 40°C (104°F). For high output options, ambient temperatures adjacent to fixture should not exceed 25°C (77°F). For all output options, ambient temperatures adjacent to remote mounted drivers should not exceed 25°C (77°F).


JAB-2019 CA Title 24 Compliant.



526 Portal Street
Cotati, CA 94931
USA
P 707.794.0888
F 707.795.4379
www.8lighting.com

All No. 8 Lighting fixtures and components are UL/CSA listed. No. 8 Lighting trims and lamp modules are protected by one or more U.S. Patents. No. 8 Lighting reserves the right to change details of design, materials, and finish.

© 2020 No. 8 Lighting
Doc # 91201-12.3



MPT2-S



CEILING MOUNT

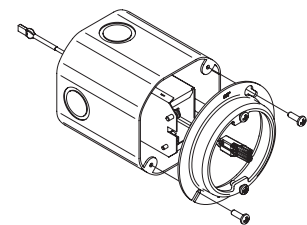
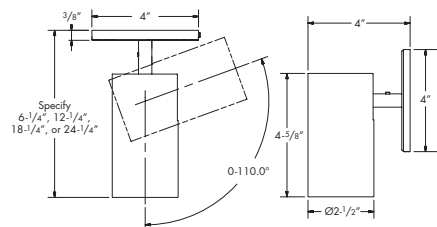
WALL MOUNT

MPT2-R



CEILING MOUNT

WALL MOUNT





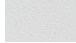



4" x 3-1/2" deep (min) junction box with 3" x 1/2" deep (min) mud-ring required for integral drivers.

For low and standard output options, junction box may be installed in direct contact with standard or spray-foam thermal insulation with a max combined R-Value of R42.

For high output options, junction box may be installed in direct contact with standard or spray-foam thermal insulation with a max combined R-Value of R30.

Mounting Accessories (Optional): **JB - 5/8** (shown), **JB - 3/4**, or **JB - 1**

PRODUCT SPECIFIER/PRODUCT ORDER NUMBER

| MONOPOINT SURFACE MOUNT | LED OPTIONS | OVERALL LENGTH* | FINISH | OPTIC OPTIONS | OPTICAL ACCESSORIES | DIMMING OPTIONS | OUTPUT | MOUNTING ACCESSORIES (optional) |
|---|--|--|---|--|--|---|---|---|
| MPT2-S 4" Square Canopy  MPT2-R 4" Round Canopy  | HI 3000K White LED HI-2* 3000K White LED WD† 3000- 1800K Warm Dim LED WD-2† 2800- 2200K Warm Dim LED *For use with 10° optic only. Available in low and standard outputs only. †Available in standard output only | 6 (standard) 12 18 24 *Nominal dimension (in inches). Actual overall length is 1/4" greater. |  WH White  SA Satin Aluminum  OB Oil-Rubbed Bronze  BK Black | 10* 10° Very Narrow Spot 15 15° Narrow Spot 25 25° Narrow Flood 40 40° Flood *For use with HI-2 LED only | HEX Hex-cell louver NSP Narrow softening lens NFL Medium softening lens FL Wide softening lens WFL Extra wide softening lens LS Linear spread lens CF24 2400K color filtering lens CF27 2700K color filtering lens CF35 3500K color filtering lens | DIM1-M (Standard) Forward or Reverse-Phase 1% Dimming DIM2-M 0-10v 1% Dimming PR1-M* Premium Forward or Reverse-Phase 0.1% Dimming LU1R-M4 Lutron Remote Mounted Hi-Lume Forward-Phase 1% Dimming LU2R-M4 Lutron Remote Mounted Hi-Lume 1% EcoSystem Dimming *Not available with WD or WD-2 LED options | 700 Low output 1000 Standard output 1000-WD Standard output – warm dimming 1400* High output *Not available w/ LU2R-M4 dimming option | JB-5/8 3-1/2" deep junction box with 5/8" deep mud ring JB-3/4 3-1/2" deep junction box with 3/4" deep mud ring JB-1 3-1/2" deep junction box with 1" deep mud ring |

One field interchangeable optic included standard. Up to three optical accessories can be accommodated.
Warranty All No. 8 Lighting products are by a 5 year limited warranty. For specific warranty details and limitations, see 8lighting.com/resources-downloads

OPTICAL OPTIONS AND ACCESSORY PERFORMANCE SUMMARY

| OPTICAL OPTIONS | BEAM ENHANCING LENS (OPTIONAL)* | | | | |
|----------------------|---------------------------------|-------|------|-------|----------|
| | + NSP | + NFL | + FL | + WFL | + LS |
| 10° Very Narrow Spot | 14° | 27° | 46° | 71° | 14 x 52° |
| 15° Spot | 20° | 27° | 42° | 61° | 19 x 47° |
| 25° Narrow Flood | 27° | 34° | 47° | 67° | 26 x 52° |
| 40° Flood | 41° | 42° | 56° | 68° | 36 x 57° |
| Lumen Multiplier | 0.93 | 0.87 | 0.88 | 0.82 | 0.89 |

*Beam enhancing lens used in combination with 10°, 15°, 25°, or 40° optic to achieve desired beam spread

MPT2 PERFORMANCE SUMMARY

| LED | Output | CCT | CRI | Delivered Lumens | System Wattage | Delivered LPW | R1 | R2 | R3 | R4 | R5 | R6 | R7 | R8 | R9 | R10 | R11 | R12 | R13 | R14 |
|------|---------|-----------|-----|------------------|----------------|---------------|----|----|-----|----|----|----|----|----|----|-----|-----|-----|-----|-----|
| HI-2 | 700 | 3000 | 93+ | 840 | 9.7 | 87 | 94 | 96 | 98 | 94 | 94 | 96 | 93 | 83 | 62 | 91 | 95 | 83 | 94 | 98 |
| HI-2 | 1000 | 3000 | 93+ | 1088 | 13.9 | 78 | 94 | 96 | 98 | 94 | 94 | 96 | 93 | 83 | 62 | 91 | 95 | 83 | 94 | 98 |
| HI | 700 | 3000 | 92+ | 549-634 | 9.3 | 59-64 | 94 | 97 | 99 | 94 | 93 | 97 | 93 | 83 | 61 | 92 | 95 | 83 | 95 | 99 |
| HI | 1000 | 3000 | 92+ | 770-890 | 14.5 | 53-62 | 93 | 97 | 100 | 93 | 93 | 97 | 92 | 82 | 59 | 92 | 95 | 83 | 94 | 99 |
| HI | 1400 | 3000 | 92+ | 952-1108 | 20.7 | 46-54 | 93 | 97 | 99 | 92 | 93 | 97 | 91 | 80 | 56 | 93 | 93 | 83 | 94 | 100 |
| WD | 1000-WD | 3000-1800 | 97+ | 754-875 | 15.0 | 51-59 | 99 | 99 | 96 | 99 | 99 | 97 | 98 | 96 | 90 | 96 | 97 | 83 | 100 | 97 |
| WD-2 | 1000-WD | 2800-2200 | 95+ | 731-849 | 15.0 | 49-57 | 98 | 97 | 96 | 96 | 99 | 93 | 90 | 86 | 74 | 96 | 96 | 87 | 99 | 99 |

MPT2 SERIES CONE OF LIGHT DIAGRAMS

