

LED LIGHT ENGINE: **RETROFIT**

LAMP MODULE: **J2, K2, L2, or M2**

Project Name	
Date	Type
Prepared By	
Comments	
Catalog #	- - - / / - /



526 Portal Street
Cotati, CA 94931
USA
P 707.794.0888
F 707.795.4379
www.8lighting.com

All No. 8 Lighting fixtures and components are UL/CSA listed. No. 8 Lighting trims and lamp modules are protected by one or more U.S. Patents. No. 8 Lighting reserves the right to change details of design, materials, and finish.

© 2019 No. 8 Lighting
Doc # 91138-12.1




PRODUCT FEATURES

Retrofit LED light engines to convert existing **800 Series** recessed housing models **801, 802, or 803** to the latest in LED technology. Available LED lamp modules include: **J2** – Adjustable, **K2** – Fixed Position, **L2-S/R** – Wall Wash Square/Round, and **M2-S/R** – Mirror Reflector Square/Round.

Lamp Module Options

- **J2** Fully adjustable lamp module features patented tool-free adjustment mechanism optimized for true 0-45° vertical and 360° horizontal adjustment. Use for adjustable accent, wall wash*, and general lighting applications. *For wall washing, specify 40° optic option and **WW-8** wall wash accessory with FS/FR or FLS/FLR (1.75" aperture) **800 Series** trims.
- **K2** Fixed position lamp module. Use for general lighting applications.
- **L2-S/L2-R** Wall wash lamp module with integral 4" SQUARE or ROUND trim plate and 1.75" aperture fits into all 800 Series Seamless trim assemblies. Includes factory installed wall wash lens and 40° optic. Available in **WH** - White, **PN** - Polished Nickel, **SN** - Satin Nickel, **OB** - Oil-rubbed bronze, or **BK** - Black. Use for uniform wall wash lighting applications.
- **M2-S/M2-R** Fully adjustable lamp module with integral 4" SQUARE or ROUND trim plate fits into all 800 Series Seamless trim assemblies. Features 45-90° vertical and 90° horizontal adjustment. Available in **WH** - White or **OB** - Oil-rubbed bronze. Use on sloped ceilings for adjustable accent, wall wash, and general lighting applications.
- Field interchangeable optic options include: 15°, 25°, and 40°.

LED Options

- **H1 3000K** 92+ CRI White LED. Minimum 2-Step color binning.
- **WD 3000-1800K** 97+ CRI Warm Dim LED. Minimum 3-Step color binning.

Optical Accessories (Optional)

- Field interchangeable beam enhancing lenses* include: **NSP**-Narrow Softening, **NFL**-Medium Softening, **FL**-Wide Softening, **WFL**-Extra Wide Softening, and **LS**-Linear Spread.
- Field interchangeable color filtering lenses include: **CF24**-2400°K, **CF27**-2700°K, & **CF35**-3500°K.

*J2, K2, and M2 only (see page 3 for additional details)

Dimming Options

- **DIM1-8** Phase dimming LED driver with 120v/60Hz input. Dimmable to 1% using compatible Forward or Reverse-Phase dimmers.
- **DIM2-8** 0-10v LED dimming driver with 120-277v/60Hz input. Dimmable to 1% using compatible 0-10v dimmers.
- **PR1-8** Premium phase dimming LED driver with 120v/60Hz input. Dimmable to 0.1% using compatible Forward or Reverse-Phase dimmers.
- **EL1-8*** EldoLED 0-10v LED dimming driver with 120-277v/60Hz input. Dimmable to 1% using compatible 0-10v dimmers.
- **EL2-8*** EldoLED DALI LED dimming driver with 120-277v/60Hz input. Dimmable to 1% using compatible DALI dimmers.
- **LU1-8** Lutron Hi-lume 1% 2-wire LED driver (120v Forward Phase only). 120v/60Hz input.
- **LU2-8*** Lutron Hi-lume 1% EcoSystem LED driver with Soft-on, Fade-to-Black. 120-277v/60Hz input.
- **LU4-8*** Lutron Hi-lume 0.1% EcoSystem LED driver with Soft-on, Fade-to-Black. 120-277v/60Hz input.

*Driver option not available for use with housing models 801 or 802.

For complete list of compatible dimmers, see 8lighting.com/resources-downloads-page

Output*

- **700** Low output. Delivers up to 660 lumens at 9.5 watts.
- **1000** Standard output. Delivers up to 1050 lumens at 15 watts.
- **1000-WD** Standard output – Warm Dimming. Delivers up to 900 lumens at 14.5 watts.

*Output varies depending on lamp module, trim type, and optical accessories used (see page 3 for additional details).

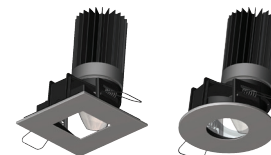
For photometric files in PDF and IES formats, see 8lighting.com/800-series-photometry



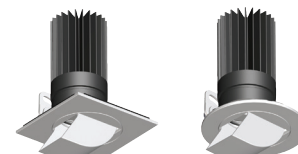
J2 - LED ADJUSTABLE



K2 - LED FIXED POSITION









L2 - LED WALL WASH



M2 - LED MIRROR REFLECTOR

PRODUCT SPECIFIER/PRODUCT ORDER NUMBER

LAMP MODULE OPTIONS	LED OPTIONS	OPTIC OPTIONS	OPTICAL ACCESSORIES (Optional)	TRIM FINISH (Leave blank for J2 and K2 modules)	DIMMING OPTIONS	OUTPUT	EXISTING HOUSING TYPE*
 <p>J2 LED ADJUSTABLE 45° tilt, full 360° rotation with tool-less locking vertical and horizontal adjustment</p>	<p>HI 3000K White LED</p> <p>WD* 3000-1800K Warm Dim LED</p> <p>*Available in standard output only</p>	<p>15* 15° Narrow Spot</p> <p>25* 25° Narrow Flood</p> <p>40 40° Flood</p> <p>*Not for use with L2 modules</p>	<p>NSP* Narrow Softening Lens</p> <p>NFL* Medium Softening Lens</p> <p>FL* Wide Softening Lens</p> <p>WFL* Extra Wide Softening Lens</p> <p>LS* Linear Spread Lens</p> <p>CF24 2400°K Color Filtering Lens</p> <p>CF27 2700°K Color Filtering Lens</p> <p>CF35 3500°K Color Filtering Lens</p> <p>*Not for use with L2 modules</p>	<p>WH WHITE Field paintable to match ceiling finish</p> <p>PN POLISHED NICKEL*†</p> <p>SN SATIN NICKEL*†</p> <p>OB OIL-RUBBED BRONZE*</p> <p>BK BLACK*†</p> <p>*Specialty finish. Additional lead time required.</p> <p>†Finish not available with M2 modules.</p>	<p>DIM1-8 Forward or Reverse-Phase 1% Dimming</p> <p>DIM2-8 0-10v 1% Dimming</p> <p>PR1-8* Premium Forward or Reverse-Phase 0.1% Dimming</p> <p>EL1-8† EldoLED 0-10v 1% Dimming</p> <p>EL2-8† EldoLED DALI 1% Dimming</p> <p>LU1-8 Lutron Hi-Lume Forward-Phase 1% Dimming</p> <p>LU2-8† Lutron Hi-Lume EcoSystem 1% Dimming</p> <p>LU4-8† Lutron 0.1% EcoSystem Dimming</p> <p>*Not available with WD option</p> <p>† Not available for use with housing models 801 or 802</p>	<p>700* Low output</p> <p>1000 Standard output</p> <p>1000-WD Standard output – Warm Dimming</p> <p>*Not available with L2 or M2 lamp module options</p>	<p>801 New Construction – Non-I.C.</p> <p>802 New Construction – Airtight-I.C.</p> <p>803 New Construction – Airtight-H.C. Non-I.C.</p> <p>* Existing housing type required for correct dimming driver mounting configuration</p>
 <p>K2 LED FIXED POSITION</p>							
 <p>L2-S* LED WALL WASH module w/integral 4" SQUARE trim plate fits into square Seamless Series™ trim assemblies</p>							
 <p>L2-R* LED WALL WASH module w/integral 4" ROUND trim plate fits into round Seamless Series™ trim assemblies</p>							
 <p>M2-S* LED MIRROR REFLECTOR module w/integral 4" SQUARE trim plate fits into square Seamless Series™ trim assemblies</p>							
 <p>M2-R* LED MIRROR REFLECTOR module w/integral 4" ROUND trim plate fits into round Seamless Series™ trim assemblies</p>							

*L2 and M2 modules require trim finish selection

One field interchangeable optic option included standard. Up to two additional optical accessories can be accommodated.

Warranty: All No. 8 Lighting products are warranted for 5 years.

OPTICAL OPTIONS AND ACCESSORY PERFORMANCE SUMMARY

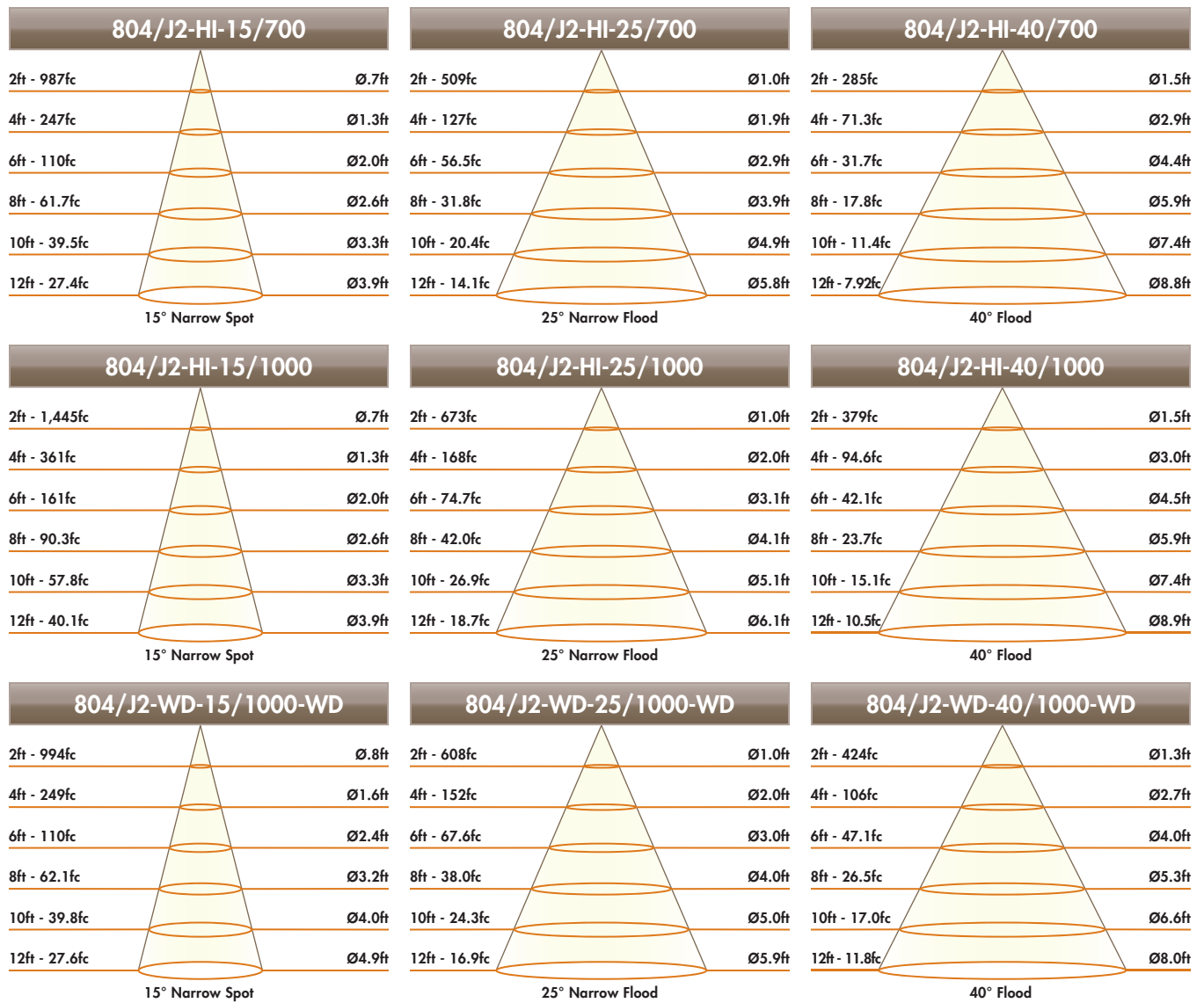
OPTICAL OPTIONS	BEAM ENHANCING LENS (OPTIONAL)*				
	+ NSP	+ NFL	+ FL	+ WFL	+ LS
15° Spot	20°	27°	42°	61°	19 x 47°
25° Narrow Flood	27°	34°	47°	67°	26 x 52°
40° Flood	41°	42°	56°	68°	36 x 57°

*Beam enhancing lens used in combination with 15°, 25°, or 40° optic to achieve desired beam spread

LAMP MODULE AND LED PERFORMANCE SUMMARY

Lamp Module	LED	Output	CCT	CRI	Delivered Lumens	System Wattage	Delivered LPW	R1	R2	R3	R4	R5	R6	R7	R8	R9	R10	R11	R12	R13	R14
J2	HI	700	3000	92+	470-660	9.5	50-70	93.6	96.8	99.2	94.0	93.3	96.8	92.7	82.4	60.1	91.8	95.5	83.4	94.5	98.8
	HI	1000	3000	92+	715-950	15	48-63	92.9	97.0	99.0	92.7	92.8	96.6	91.4	80.6	57.3	92.1	93.8	84.7	94.1	99.2
	WD	1000-WD	3000-1800	97+	603-881	14.3	42-62	99.2	99.4	96.4	99.0	98.7	97.2	97.6	96.1	91.1	96.8	97.3	82.4	99.5	96.9
K2	HI	700	3000	92+	550-689	9.3	59-74	93.9	96.9	99.3	94.1	93.5	97.1	92.3	82.8	61.2	92.1	95.7	83.0	94.7	98.8
	HI	1000	3000	92+	840-1050	15	56-70	92.9	97.0	99.0	92.7	92.8	96.6	91.4	80.6	57.3	92.1	93.8	84.7	94.1	99.2
	WD	1000-WD	3000-1800	97+	703-905	14.5	46-62	99.3	99.1	95.8	98.9	98.7	97.2	97.8	96.3	91.0	96.0	96.7	83.2	99.7	96.6
L2	HI	1000	3000	92+	290-330	15	19-22	92.5	96.8	99.2	92.0	92.2	96.4	91.2	79.9	55.6	91.6	93.1	82.5	93.7	99.4
	WD	1000-WD	3000-1800	97+	293-351	14.7	20-24	99.1	99.3	96.5	98.8	98.8	97.1	97.3	95.9	90.8	97.0	97.1	83.3	99.4	97.0
M2	HI	1000	3000	92+	596-712	15	39-47	92.3	96.0	99.2	91.9	92.0	96.3	91.2	79.9	55.0	91.4	92.9	82.1	93.5	99.4
	WD	1000-WD	3000-1800	97+	474-569	14.8	32-39	99.1	99.0	96.1	98.6	98.1	97.2	97.2	95.5	87.8	95.5	97.5	82.5	99.6	96.8

J2 CONE OF LIGHT DIAGRAMS



K2 CONE OF LIGHT DIAGRAMS

