

MPT2-RT MONOPOINT | LED SURFACE MOUNT 2-1/2" CANOPY

Project Name	
Date	Type
Prepared By	
Comments	
Catalog # MPT2-RT- - - 6 - / - / -	

PRODUCT FEATURES

Monopoint – Surface Mount 2-1/2" Canopy

- Die-cast aluminum construction with 2-1/2" SQUARE or ROUND canopy for remote mounted LED driver.
- Features integrated snoot with 1/2" beveled regress for glare control.
- 6" Overall length. Ceiling or wall mountable.
- Available in many designer finishes including: **WH**-White, **SA**-Satin Aluminum, **OB**-Oil-Rubbed Bronze, and **BK**-Black.
- Rotates 320° and tilts 110°.
- UL damp listed (covered ceiling/wall applications). Not for wet locations.

LED Options

- **HI** 3000K 92+ CRI White LED. Minimum 2-Step color binning.
- **WD** 3000-1800K 97+ CRI Warm Dim LED. Minimum 3-Step color binning.
- Field interchangeable optic options include: 15°, 25°, and 40°.

Optical Accessories (Optional)*

- **HEX** - Hex-cell louver
- Field interchangeable beam enhancing lenses include: **NSP**-Narrow Softening, **NFL**-Medium Softening, **FL**-Wide Softening, **WFL**-Extra Wide Softening, and **LS**-Linear Spread. See Page 2 for details.
- Field interchangeable color filtering lenses include: **CF24**-2400°K, **CF27**-2700°K, & **CF35**-3500°K.

*Up to three optical accessories can be accommodated.

Dimming Options

- **LU1R-M2** Remote Lutron Hi-lume 1% 2-wire LED driver (120 V forward phase only). 120v/60Hz input.
- **LU2R-M2** Remote Lutron Hi-lume 1% EcoSystem LED driver with Soft-on, Fade-to-Black. 120-277v/60Hz input.

Remote mounted LED driver can be mounted up to 100ft from fixture using 12AWG Class 2 stranded wire. See wire length table.

Maximum Driver-to-LED Light Engine Wire Length		
Driver Model		Wire Gauge
LU1R/LU2R-700 + LU1R/LU2R-1000-WD	LU1R/LU2R-1000 + LU1R-1400	
8 ft (2.5 m)	4 ft (1.2 m)	24 AWG (0.2 mm ²)
13 ft (4 m)	6 ft (1.8 m)	22 AWG (0.34 mm ²)
20 ft (6 m)	10 ft (3 m)	20 AWG (0.5 mm ²)
30 ft (9 m)	15 ft (4.5 m)	18 AWG (.75 mm ²)
35 ft (10.5 m)	25 ft (7.5 m)	16 AWG (1.5 mm ²)
50 ft (15 m)	40 ft (12 m)	14 AWG (2.5 mm ²)
100 ft (30 m)	60 ft (18 m)	12 AWG (4.0 mm ²)

Wire Type: Stranded Class 2 wire (supplied by others)


Output

- **700** Low output. Delivers up to 630 lumens at 9.3 watts.
- **1000** Standard output. Delivers up to 890 lumens at 14.5 watts.
- **1000-WD** Standard output - Warm Dimming. Delivers up to 880 lumens at 15 watts.
- **1400** High output. Delivers up to 1110 lumens at 20.7 watts.

For photometric files in PDF and IES formats, see 8lighting.com/Photometry/MPT2Series

Ambient temperatures adjacent to fixture should not exceed 40°C (104°F) during normal operation. Ambient temperatures adjacent to remote mounted drivers should not exceed 25°C (77°F).


JA8-2016 CA Title 24 Compliant.



526 Portal Street
Cotati, CA 94931
USA
P 707.794.0888
F 707.795.4379
www.8lighting.com

All No. 8 Lighting fixtures and components are UL/CSA listed. No. 8 Lighting trims and lamp modules are protected by one or more U.S. Patents. No. 8 Lighting reserves the right to change details of design, materials, and finish.

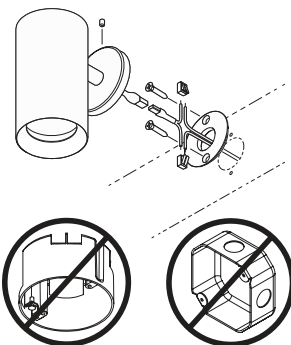
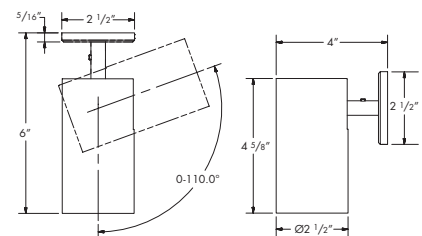
© 2018 No. 8 Lighting
Doc # 91202-11.5



MPT2-RT-S



MPT2-RT-R



INSTALLATION NOTE:



Must attach to suitable blocking to support the installation. Allow sufficient space for low voltage connections at back of fixture canopy. Fixture does not install to a JBox or standard mud ring.

PRODUCT SPECIFIER/PRODUCT ORDER NUMBER

MPT2-RT-

6

MONOPOINT SURFACE MOUNT - LED OPTIONS - OVERALL LENGTH (Inches) - FINISH / OPTIC OPTIONS - OPTICAL ACCESSORIES** / DIMMING OPTIONS - OUTPUT

<p>MPT2-RT-S 2-1/2" Square Canopy</p>  <p>MPT2-RT-R 2-1/2" Round Canopy</p> 	<p>HI 3000K White LED</p> <p>WD* 3000-1800K Warm Dim LED</p> <p>*Available in Standard output only.</p>	<p>6</p>	<p>WH White</p> <p>SA Satin Aluminum</p> <p>OB Oil-Rubbed Bronze</p> <p>BK Black</p>	<p>15 15° narrow spot</p> <p>25 25° narrow flood</p> <p>40 40° flood</p>	<p>HEX Hex-cell louver</p> <p>NSP Narrow softening lens</p> <p>NFL Medium softening lens</p> <p>FL Wide softening lens</p> <p>WFL Extra wide softening lens</p> <p>LS Linear spread lens</p> <p>CF24 2400K color filtering lens</p> <p>CF27 2700K color filtering lens</p> <p>CF35 3500K color filtering lens</p>	<p>LU1R-M2 Lutron Remote Mounted Hi-Lume Forward-Phase 1% Dimming</p> <p>LU2R-M2 Lutron Remote Mounted Hi-Lume 1% EcoSytem Dimming</p>	<p>700 Low output</p> <p>1000 Standard output</p> <p>1000-WD Standard output – warm dimming</p> <p>1400* High output</p> <p>*Not available w/ LU2R-M2 dimming option.</p>
--	---	-----------------	--	---	--	--	---

One field replaceable optic option included standard. Up to two additional optical accessories can be accommodated.
Warranty All No. 8 Lighting products are warranted for five years

OPTICAL OPTIONS AND ACCESSORY PERFORMANCE SUMMARY

OPTICAL OPTIONS	BEAM ENHANCING LENS (OPTIONAL)*				
	+ NSP	+ NFL	+ FL	+ WFL	+ LS
15° Spot	20°	27°	42°	61°	19 x 47°
25° Narrow Flood	27°	34°	47°	67°	26 x 52°
40° Flood	41°	42°	56°	68°	36 x 57°

*Beam enhancing lens used in combination with 15°, 25°, or 40° optic to achieve desired beam spread

MPT2 PERFORMANCE SUMMARY

LED	Output	CCT	CRI	Delivered Lumens	System Wattage	Delivered LPW	R1	R2	R3	R4	R5	R6	R7	R8	R9	R10	R11	R12	R13	R14
HI	700	3000	92+	549-634	9.3	59-64	93.8	97.0	99.4	93.8	93.4	97.0	92.7	82.6	60.8	92.2	95.4	82.9	94.7	98.9
HI	1000	3000	92+	770-890	14.5	53-62	93.3	97.0	99.5	93.2	93.0	96.9	92.0	81.5	58.6	92.2	94.5	83.1	94.4	99.2
WD	1000-WD	3000-1800	97+	754-875	15	51-59	99.4	98.9	95.7	98.6	98.5	97.2	97.9	96.0	90.2	95.5	97.0	82.5	99.8	96.5
HI	1400	3000	92+	952-1108	20.7	46-54	92.7	97.2	98.7	92.0	92.5	96.9	90.8	79.8	55.7	92.7	93.1	83.4	94.1	99.8

MPT2-RT SERIES CONE OF LIGHT DIAGRAMS

