

# MPT2 MONOPOINT | LED SURFACE MOUNT 4" CANOPY

Project Name	
Date	Type
Prepared By	
Comments	
Catalog # <b>MPT2-</b> - - - / - / - /	

## PRODUCT FEATURES

### Monopoint – Surface Mount 4" Canopy

- Die-cast aluminum construction with 4" SQUARE or ROUND canopy for integral or remote mounted LED driver.
- Multiple lengths available including: 6" (standard), 12", 18", and 24". Ceiling or wall mountable.
- Features integrated snoot with 1/2" beveled regress for glare control.
- Available in many designer finishes including: **WH**-White, **SA**-Satin Aluminum, **OB**-Oil-Rubbed Bronze, and **BK**-Black.
- Rotates 320° and tilts 110°.
- UL damp listed (covered ceiling/wall applications). Not for wet locations.

### LED Options

- **HI** 3000K 92+ CRI White LED. Minimum 2-Step color binning.
- **WD** 3000-1800K 97+ CRI Warm Dim LED. Minimum 3-Step color binning.
- Field interchangeable optic options include: 15°, 25°, and 40°.

### Optical Accessories (Optional)\*

- **HEX** - Hex-cell louver
- Field interchangeable beam enhancing lenses include: **NSP**-Narrow Softening, **NFL**-Medium Softening, **FL**-Wide Softening, **WFL**-Extra Wide Softening, and **LS**-Linear Spread. See Page 2 for details.
- Field interchangeable color filtering lenses include: **CF24**-2400°K, **CF27**-2700°K, & **CF35**-3500°K.

\*Up to three optical accessories can be accommodated.

### Dimming Options

- **DIM1-M\*** Integral phase dimming LED driver with 120v/60Hz input. Dimmable to 1% using compatible Forward or Reverse-Phase dimmers.
- **DIM2-M\*** Integral 0-10v LED dimming driver with 120-277v/60Hz input. Dimmable to 1% using compatible 0-10v dimmers.
- **PR1-M\*** Integral premium phase dimming LED driver with 120v/60Hz input. Dimmable to 0.1% using compatible Forward or Reverse-Phase dimmers.
- **LU1R-M4\*\*** Remote Lutron Hi-lume 1% 2-wire LED driver (120 V forward phase only). 120v/60Hz input.

- **LU2R-M4\*\*** Remote Lutron Hi-lume 1% EcoSystem LED driver with Soft-on, Fade-to-Black. 120-277v/60Hz input.

\*4" x 3-1/2" deep junction box with 3" x 1/2" deep (min) mud-ring required for integral drivers.

\*\*4" x 1-1/2" deep junction box with 3" mud-ring optional for remote mounted drivers.

For complete list of compatible dimmers, see [8lighting.com/DimmingCompatibility](http://8lighting.com/DimmingCompatibility)

### Output

- **700** Low output. Delivers up to 630 lumens at 9.3 watts.
- **1000** Standard output. Delivers up to 890 lumens at 14.5 watts.
- **1000-WD** Standard output - Warm Dimming. Delivers up to 880 lumens at 15 watts.
- **1400** High output. Delivers up to 1110 lumens at 20.7 watts.


For photometric files in PDF and IES formats, see [8lighting.com/Photometry/MPT2Series](http://8lighting.com/Photometry/MPT2Series)

### Mounting Accessories (Optional)

- **JB-5/8** 3-1/2" deep junction box with 5/8" deep mud ring.
- **JB-3/4** 3-1/2" deep junction box with 3/4" deep mud ring.
- **JB-1** 3-1/2" deep junction box with 1" deep mud ring.

For low and standard output options, ambient temperatures adjacent to fixture should not exceed 40°C (104°F). For high output options, ambient temperatures adjacent to fixture should not exceed 25°C (77°F). For all output options, ambient temperatures adjacent to remote mounted drivers should not exceed 25°C (77°F).


JAB-2016 CA Title 24 Compliant.



526 Portal Street  
Cotati, CA 94931  
USA  
P 707.794.0888  
F 707.795.4379  
[www.8lighting.com](http://www.8lighting.com)

All No. 8 Lighting fixtures and components are UL/CSA listed. No. 8 Lighting trims and lamp modules are protected by one or more U.S. Patents. No. 8 Lighting reserves the right to change details of design, materials, and finish.

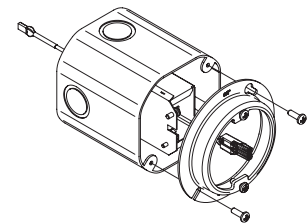
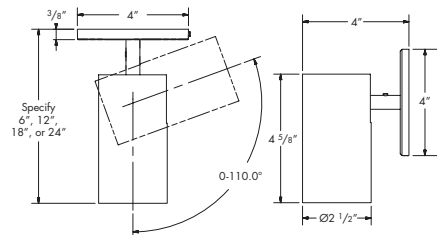
© 2018 No. 8 Lighting  
Doc # 91201-11.6



## MPT2-S



## MPT2-R



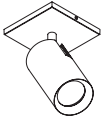


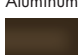
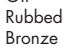

4" x 3-1/2" deep (min) junction box with 3" x 1/2" deep (min) mud-ring required for integral drivers.

For low and standard output options, junction box may be installed in direct contact with standard or spray-foam thermal insulation with a max combined R-Value of R42.

For high output options, junction box may be installed in direct contact with standard or spray-foam thermal insulation with a max combined R-Value of R30.

Mounting Accessories (Optional): **JB-5/8** (shown), **JB-3/4**, or **JB-1**

PRODUCT SPECIFIER/PRODUCT ORDER NUMBER

MPT2-									
MONOPOINT SURFACE MOUNT	LED OPTIONS	OVERALL LENGTH (Inches)	FINISH	OPTIC OPTIONS	OPTICAL ACCESSORIES**	DIMMING OPTIONS	OUTPUT	MOUNTING ACCESSORIES (optional)	
<b>MPT2-S</b> 4" Square Canopy 	<b>HI</b> 3000K White LED  <b>WD*</b> 3000-1800K Warm Dim LED  *Available in Standard output only.	<b>6</b> (standard) <b>12</b> <b>18</b> <b>24</b>	 <b>WH</b> White   <b>SA</b> Satin Aluminum   <b>OB</b> Oil-Rubbed Bronze   <b>BK</b> Black	<b>15</b> 15° narrow spot <b>25</b> 25° narrow flood <b>40</b> 40° flood	<b>HEX</b> Hex-cell louver <b>NSP</b> Narrow softening lens <b>NFL</b> Medium softening lens <b>FL</b> Wide softening lens <b>WFL</b> Extra wide softening lens <b>LS</b> Linear spread lens <b>CF24</b> 2400K color filtering lens <b>CF27</b> 2700K color filtering lens <b>CF35</b> 3500K color filtering lens	<b>DIM1-M</b> (Standard) Forward or Reverse-Phase 1% Dimming <b>DIM2-M</b> 0-10v 1% Dimming <b>PR1-M*</b> Premium Forward or Reverse-Phase 0.1% Dimming <b>LU1R-M4</b> Lutron Remote Mounted Hi-Lume Forward-Phase 1% Dimming <b>LU2R-M4</b> Lutron Remote Mounted Hi-Lume 1% EcoSystem Dimming  *Not available with WD option.	<b>700</b> Low output <b>1000</b> Standard output <b>1000-WD</b> Standard output – warm dimming <b>1400*</b> High output *Not available w/ LU2R-M4 dimming option.	<b>JB-5/8</b> 3-1/2" deep junction box with 5/8" deep mud ring. <b>JB-3/4</b> 3-1/2" deep junction box with 3/4" deep mud ring. <b>JB-1</b> 3-1/2" deep junction box with 1" deep mud ring.	
<b>MPT2-R</b> 4" Round Canopy 									

One field replaceable optic option included standard. Up to two additional optical accessories can be accommodated.  
**Warranty** All No. 8 Lighting products are warranted for five years

OPTICAL OPTIONS AND ACCESSORY PERFORMANCE SUMMARY

OPTICAL OPTIONS	BEAM ENHANCING LENS (OPTIONAL)*				
	+ NSP	+ NFL	+ FL	+ WFL	+ LS
15° Spot	20°	27°	42°	61°	19 x 47°
25° Narrow Flood	27°	34°	47°	67°	26 x 52°
40° Flood	41°	42°	56°	68°	36 x 57°

\*Beam enhancing lens used in combination with 15°, 25°, or 40° optic to achieve desired beam spread

MPT2 PERFORMANCE SUMMARY

LED	Output	CCT	CRI	Delivered Lumens	System Wattage	Delivered LPW	R1	R2	R3	R4	R5	R6	R7	R8	R9	R10	R11	R12	R13	R14
HI	700	3000	92+	549-634	9.3	59-64	93.8	97.0	99.4	93.8	93.4	97.0	92.7	82.6	60.8	92.2	95.4	82.9	94.7	98.9
HI	1000	3000	92+	770-890	14.5	53-62	93.3	97.0	99.5	93.2	93.0	96.9	92.0	81.5	58.6	92.2	94.5	83.1	94.4	99.2
WD	1000-WD	3000-1800	97+	754-875	15	51-59	99.4	98.9	95.7	98.6	98.5	97.2	97.9	96.0	90.2	95.5	97.0	82.5	99.8	96.5
HI	1400	3000	92+	952-1108	20.7	46-54	92.7	97.2	98.7	92.0	92.5	96.9	90.8	79.8	55.7	92.7	93.1	83.4	94.1	99.8

**MPT2 SERIES CONE OF LIGHT DIAGRAMS**

